



Philips Consumer Lifestyle

# Service Manual

## PRODUCT INFORMATION

### Features

- Click & Go
- Powerful (800 W)
- Large bowl (3,6 L dry, 1,8 L liquid capacity)
- Easy Clean button
- Vario speed and pulse function
- Graphics on the appliance
- Suction feet
- Cord Storage
- : Easy assembly and disassembly system.
- : Capable of handling even the toughest tasks.
- : Capable of processing large batches at once.
- : Easy cleaning of chopper bowl, which is also dishwasher safe.
- : Smoothly adjusting the speed to the job.
- : Quickly choosing the right accessory for the job.
- : Keeping the appliance perfectly stable and safe during operation.
- : Adjusting the cord length to the specific situation.

### Accessories

- Extra thick, break resistant Blender Jar (2,0 L dry, 1,5 L liquid capacity)
- Stainless steel metal blade
- Plastic insert holder
- Stainless steel slicing insert medium
- Stainless steel slicing insert fine
- Stainless steel shredding insert medium
- Stainless steel shredding insert fine
- Stainless steel granulating disc
- Plastic kneading accessory
- Metal balloon beater
- Citrus press
- Plastic pusher
- : Blending, pureeing and shaking of fruits, dairy, batters, soups, vegetables, meat and fish.
- : Chopping, blending, pureeing, and mixing of meat, fish, vegetables, dairy, fruits and nuts.
- : Disc-shaped space-saving tool holder for different inserts.
- : Slicing vegetables and fruits.
- : Slicing vegetables and fruits very fine.
- : Shredding vegetables, fruits and cheese.
- : Shredding vegetables, fruits and cheese very fine.
- : Granulating vegetables and fruits.
- : Kneading all kinds of dough (up to 1,3 kg dough) and mixing cake batters (up to 0,8 kg of batter).
- : For all kinds of whipping, whisking and emulsifying jobs.
- : For making large quantities (1,8 L) of citrus juice in a short time.
- : Pushing the ingredients in the bowl during the process. The pusher has a hole, so that oil can gradually be added.

### Safety

- Automatic resettable thermal cut off
- Built-in safety lock
- Brake system
- : Protecting the motor against overheating.
- : Detects whether lid & bowl are assembled.
- : Stops the accessories within 1,5 seconds.

## TECHNICAL INFORMATION

## HR7744/55 / HR7744/56

- Motor : Universal, radio/TV interference suppressed
- Power consumption : 800 Watt max.
- Voltage and frequency : 220 V - 240 V, 50 Hz
- Cord set : 100 cm, double insulated with moulded on plug
- Speed setting : Vario speed settings
- Bowl capacity : 3,6 L dry ingredients, 1,8 L liquid ingredients
- Blender capacity : 2,0 L dry ingredients, 1,5 L liquid ingredients

### Materials used

- Bowl, lid, blender jar, blender cup, safety cap, juicer lid : SAN
- Housing, blender lid, pusher, inlay bowl and blender handle, citrus press (sieve and cone), storage box, kneading accessory : PP
- Balloon Beater : Metal Balloon, POM housing
- Insert holder : ABS

### Colours

- Bright white and sunflower orange, clear transparent bowl and jar.

### Preliminary data

	No. of pcs	Weight (kg)	Dimensions (mm)
- F-box	1	5,90	390 x 290 x 400

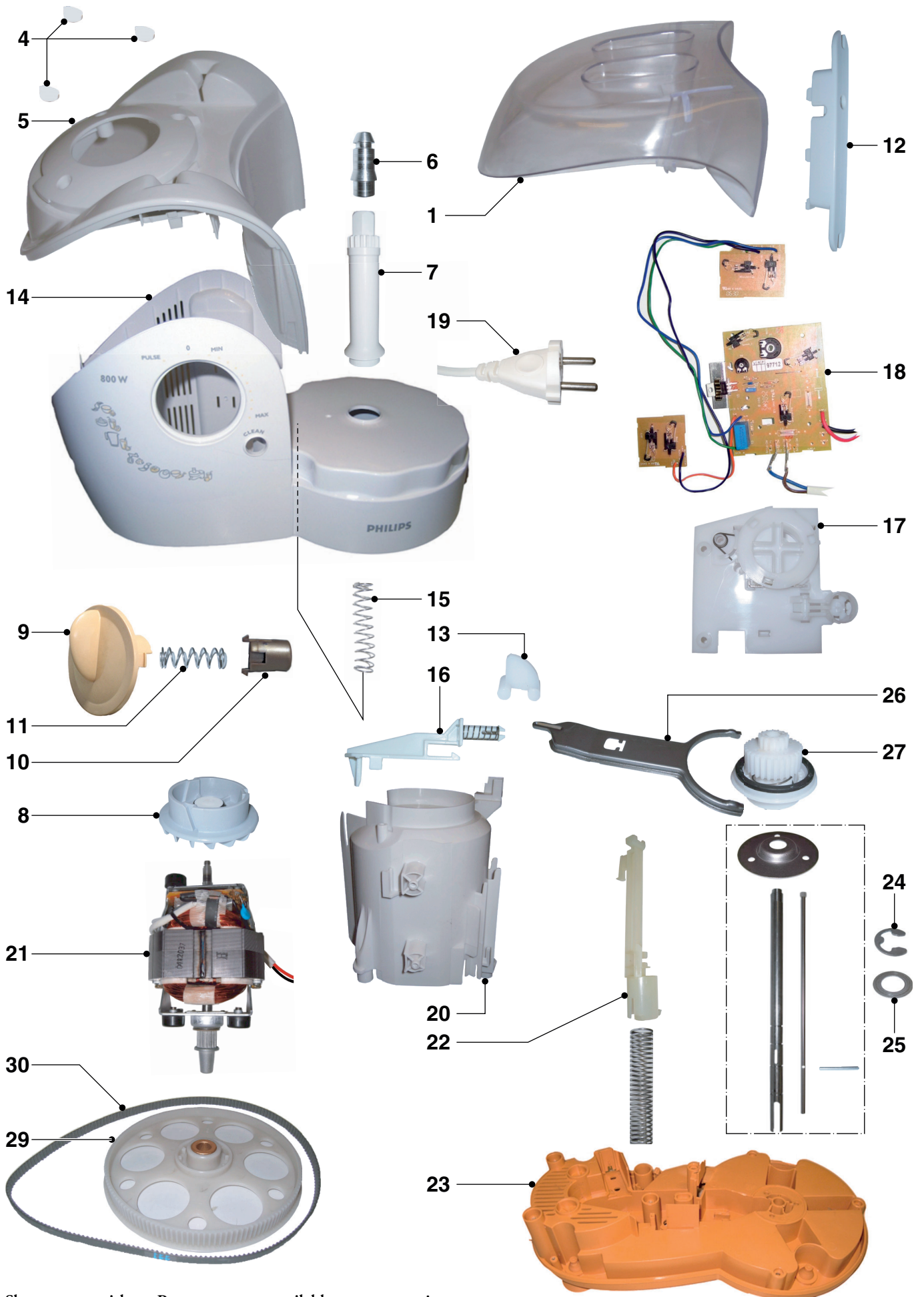
## PARTS LIST

Pos	Service code	Description
1	4203 065 65480	Housing Cap
4	4203 065 65150	Screw cap (3 pcs.)
5	4203 035 85120	Housing Top
6	4203 065 65310	Coupling Toolholder
7	4203 035 85130	Toolholder
8	4203 035 85300	Blender Coupling HR7735-44/55
9	4203 035 85140	Power Knob
10	4203 035 85150	Quick Clean Knob
11	4203 065 65270	Spring - Quick Clean Knob
12	4203 035 85160	Cordset Holder
13	4203 065 65180	Detection Lever - Jar
14	4203 035 85170	Housing printed HR7744/55
15	4203 065 65390	Spring Bowl Detection
16	4203 065 65190	Horizontal Lever
17	4203 065 65230	PCB Frame Assy
18	4203 065 65200	PCB Assy
19	4203 065 64020	Cordset EU
	4203 065 64000	Cordset UK
	4203 065 65400	Cordset Swiss
20	4203 065 65170	Airtunnel
21	4203 065 65450	Motor Assy
22	4203 065 65290	Decoupling lever
23	4203 035 85180	Bottom Assy HR7744/55
24	4203 065 65780	Retaining Ring

Pos	Service code	Description
25	4203 065 65770	Washer
26	4203 065 65420	Coupling Fork
27	4203 065 65440	Coupling Assy
29	4203 065 65410	Toothed Wheel Assy
30	4203 065 65460	Belt
35	4203 035 85190	Pusher Chopper Bowl
36	4203 035 85200	Chopping Bowl Lid
37	4203 065 65630	Rubber Sealing Ring
38	4203 035 85210	Chopper Bowl Assy
40	4203 035 85220	Citrus Press Cone
41	4203 035 85230	Citrus Press Sieve
45	4203 065 65560	Stopper lid - Jar
46	4203 035 85240	Jar Lid
47	4203 035 85250	Blender Jar Assy
50	4203 065 61540	Slicing Insert medium
51	4203 065 61530	Slicing Insert fine
52	4203 065 61560	Shredding Insert medium
53	4203 065 61550	Shredding Insert fine
54	4203 065 61570	Granulating Insert (Reibekuchen)
55	4203 035 85260	Insert Holder Assy
60	4203 065 65590	Balloon Beater Gearbox
61	4203 065 65580	Metal Balloon Beater
62	4203 035 85270	Plastic Kneader
63	4203 065 65490	Chopping Knife Assy

**EXPLODED VIEW**

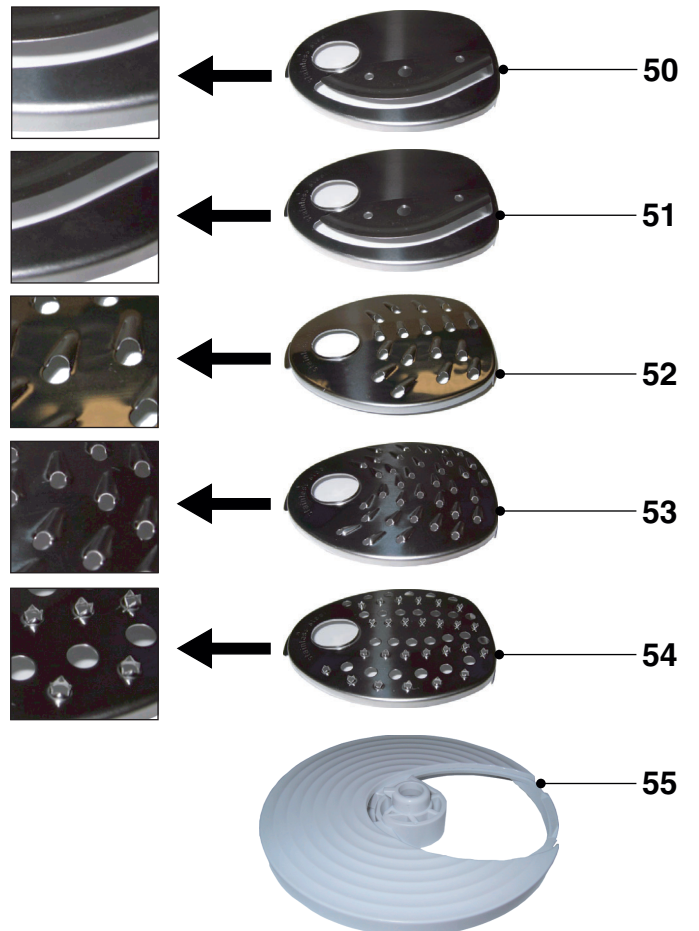
**HR7744/55 / HR7744/56**



Shown parts without Pos. no. are not available as spareparts!

**EXPLODED VIEW**

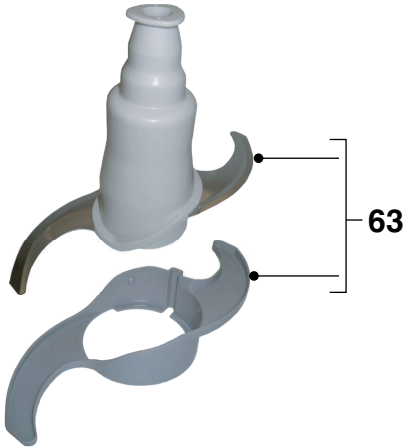
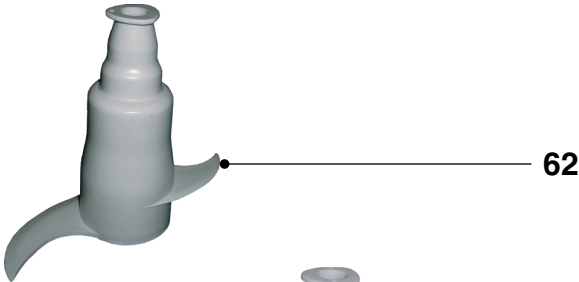
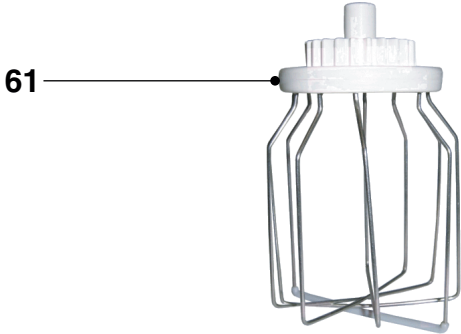
**HR7744/55 / HR7744/56**





**EXPLODED VIEW**

**HR7744/55 / HR7744/56**



To repair something inside the foodprocessor:

1. Remove the screw of the cord holder.



To remove the Top Housing:

1. Push a screwdriver through the 3 Screw Caps to remove them.
2. Use a screwdriver Torx T15 to remove the 3 screws from the Top Housing.



## REPAIR INSTRUCTION

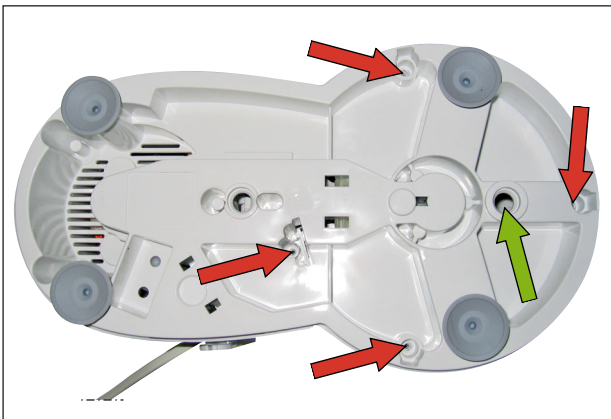
## HR7744/55 / HR7744/56

### To remove the Housing:

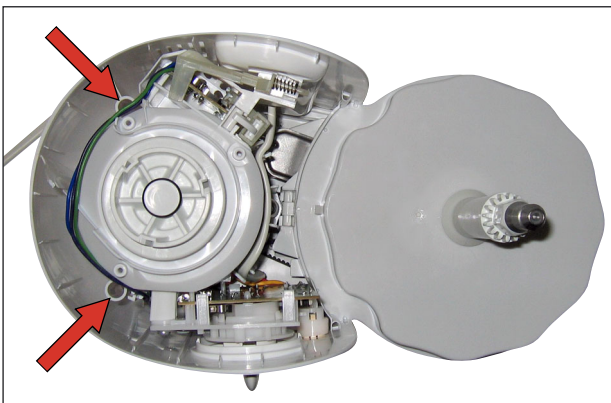
1. Remove the Toolholder coupling by turning it counterclockwise with protected tongs to prevent the coupling from damages (You can use e.g. foam rubber).



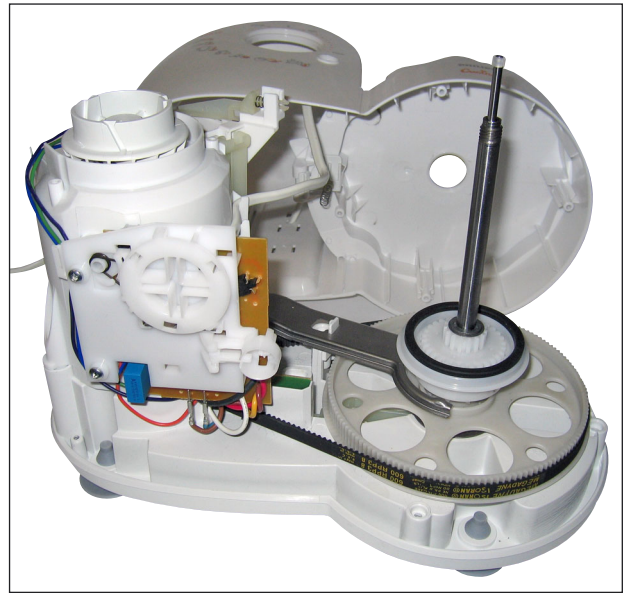
2. Remove the 4 screws on the bottomside of the foodprocessor.  
The green arrow shows you the hole, where you can stick through a pin to fixate the acc. drive wheel, when you want to remove the blender coupling. After that you can turn the blender coupling clockwise for removing it.



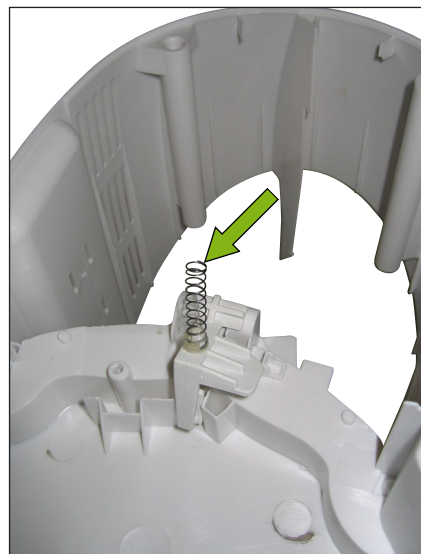
3. Remove the 2 last screws (marked with the red arrows). After this you can remove the housing.



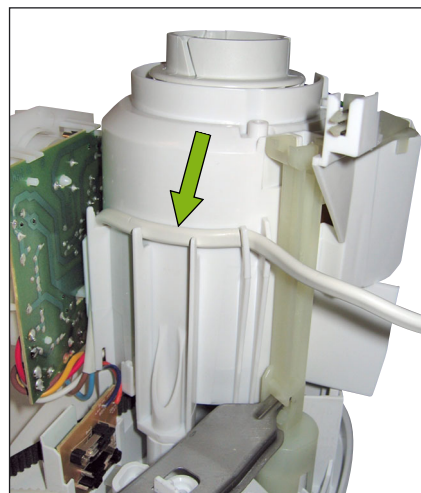
- In this situation, you could replace for example the cord set or the PCB.



- Be sure, that you don't lose the Spring – Bowl detection on the bottomside of the housing!



- Be sure, that a replaced cord set is also placed in the designed cable guide.

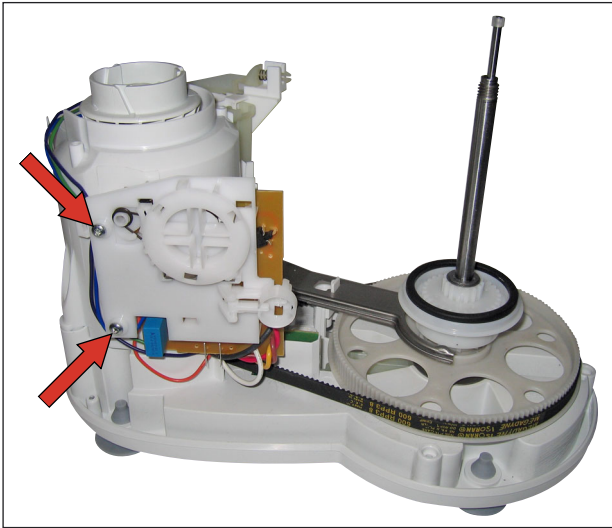


## REPAIR INSTRUCTION

## HR7744/55 / HR7744/56

To remove the PCB's:

1. Remove the 2 screws to loosen the Main PCB.



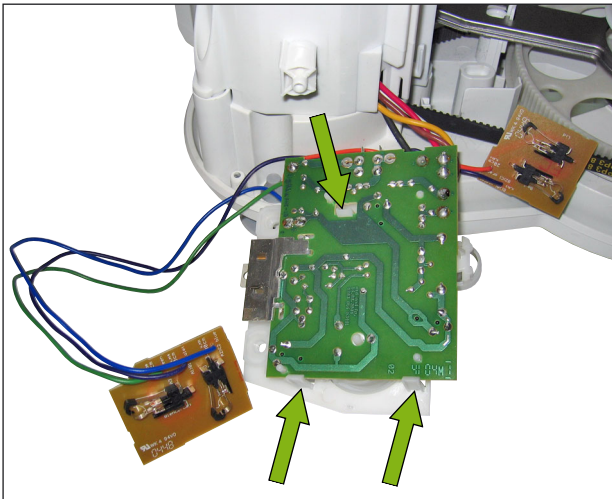
To remove the upper part of the coupling:

1. Remove the retaining ring with a screwdriver.



To remove the PCB Frame:

1. Release the 3 snaphooks, which hold the PCB on the frame.



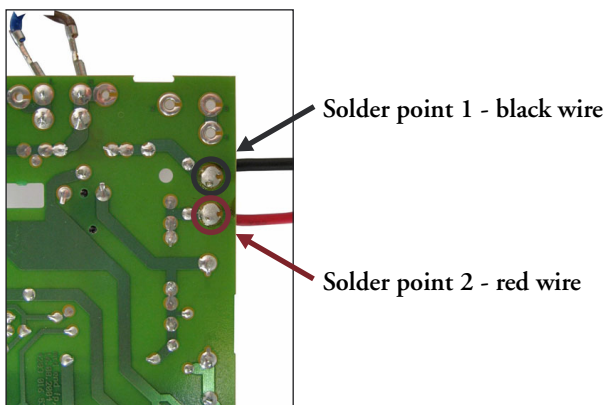
To remove the lower part of the coupling:

1. Remove the retaining ring with a screwdriver.



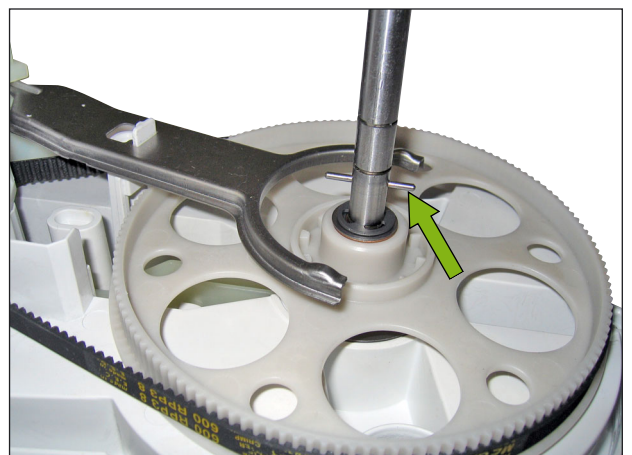
Soldering of Motor wires on PCB:

- Here you can see the colours of the Motor wires and their soldering points on the PCB.



In this situation you can exchange for example the coupling fork.

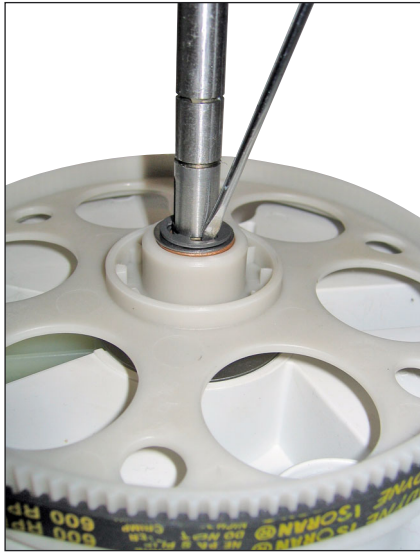
If you want to exchange the toothed wheel, you have to remove the coupling fork and also the small axle from the „click & go“ system (green arrow).





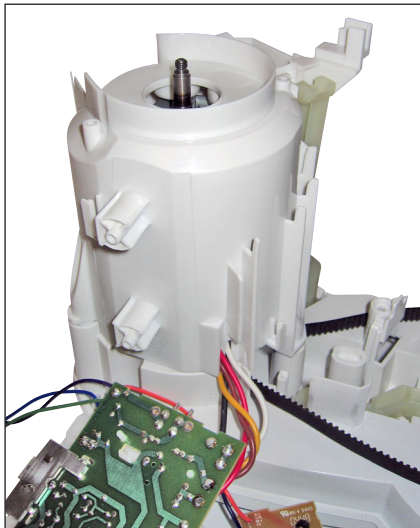
To remove the toothed wheel:

1. Remove the retaining ring with a screwdriver.



To replace the Motor:

1. Remove the 3 screws from the Airtunnel.



After removing the Airtunnel, you can exchange the motor, the belt or the belt tension.

